



OVO ENERGY TOUR OF BRITAIN – STAGE 8

14TH SEPTEMBER 2019

DURING THE EVENT LISTED ABOVE THE EVENT ORGANISERS AND GMP WILL OPERATE A ROLLING ROAD BLOCK SYSTEM TO ALLOW THE RIDERS, OFFICIALS AND SUPPORT VEHICLES TO PASS THROUGH THE SADDLEWORTH AND SHAW AREA.

IT IS EXPECTED THE TOUR WILL PASS THROUGH THE ENTIRE AREA APPROXIMATELY BETWEEN 12:15 (GREENFIELD) AND 13:00 (BROAD LANE - ROCHDALE)

BELOW IS A SERIES OF MAPS SHOWING THE ROUTE THROUGH THE SADDLEWORTH AND SHAW AREA

A LIST OF SERVICES THAT COULD POTENTIALLY BE AFFECTED BY THE RACE DURING THE ABOVE TIMES IS ALSO INCLUDED. IT IS EXPECTED THE DISRUPTION WILL BE MINIMAL.

IF YOUR SERVICE IS AFFECTED YOU SHOULD FOLLOW THE DIRECTIONS OF THE ON SITE STEWARDS AND GMP AND WAIT FOR THE RACE TO PASS THROUGH.

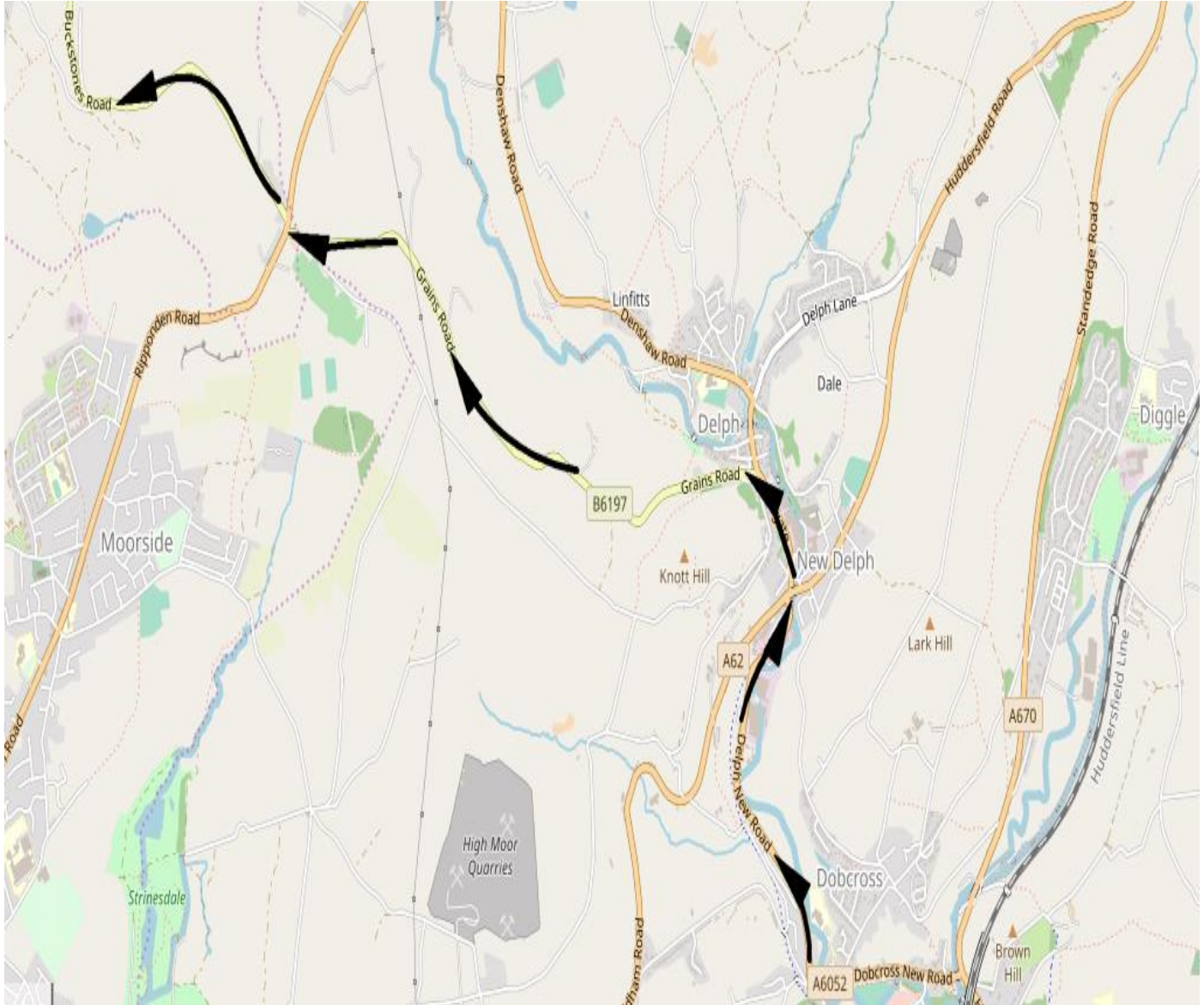
SOME SERVICES SUCH AS THE 350,356 MAY ENCOUNTER THE RACE SEVERAL TIMES THROUGH A JOURNEY I.E MILLBROOK, GREENFIELD, AND UPPERMILL, IF THIS CAUSES SEVERE DELAYS THE OPERATOR SHOULD LOOK TO REGULATE THE AFFECTED SERVICES.

PASSENGERS SHOULD EXPECT DELAYS TO SERVICES AND ADJUST TRAVELLING TIMES ACCORDINGLY FOR THE DURATION OF THE STAGE THROUGH SADDLEWORTH AND SHAW.

ROUTE OF TOUR OF BRITAIN AND SERVICES AFFECTED: GREENFIELD/UPPERMILL/DELPH



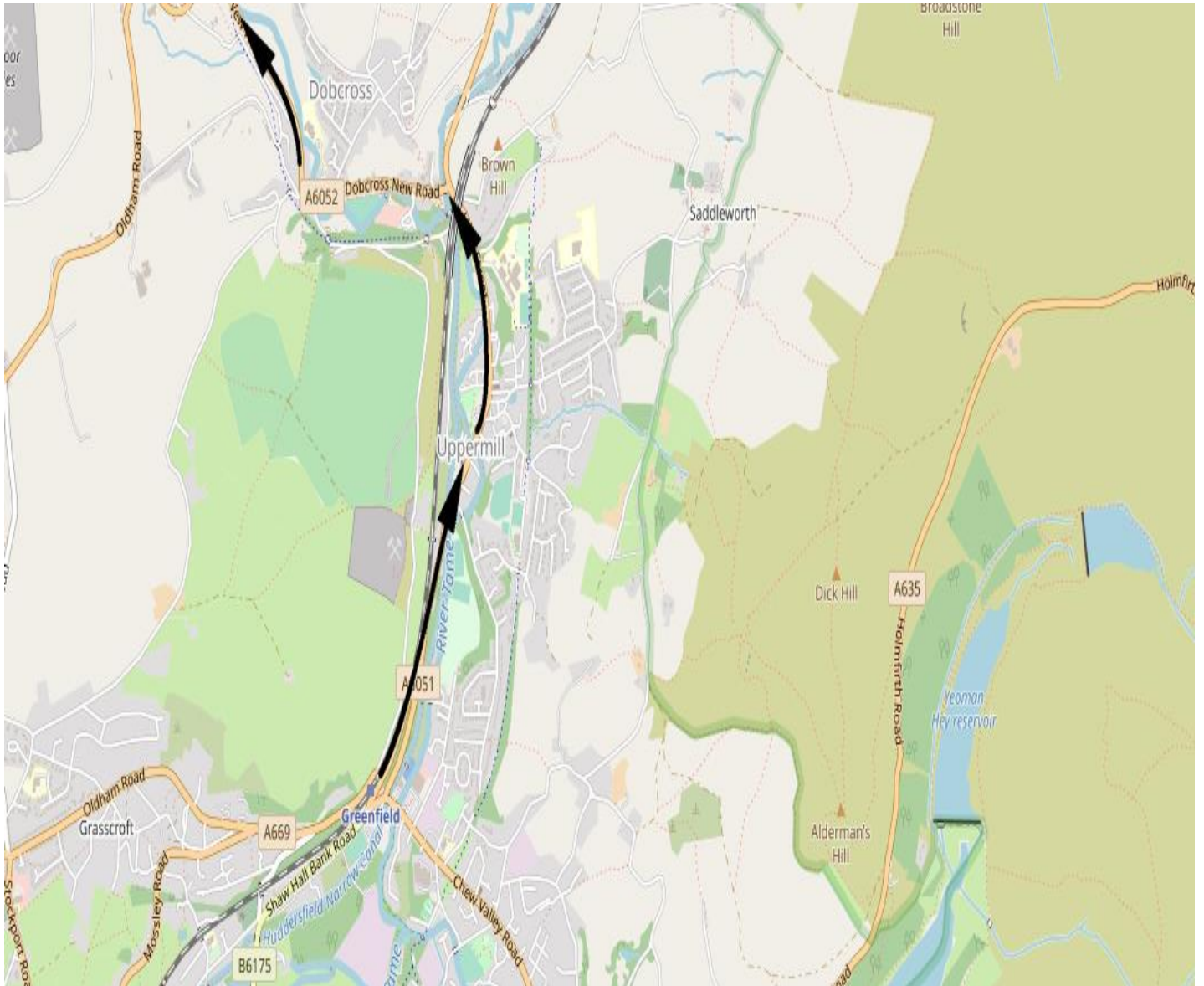
**DOBCROSS NEW ROAD - DELPH NEW ROAD - THE SOUND – GRAINS ROAD
SERVICES AFFECTED: 180,184,350,352,353,354,356**





OLDHAM ROAD A669 – OLDHAM ROAD A670 - HIGH STREET – DOBCROSS NEW ROAD

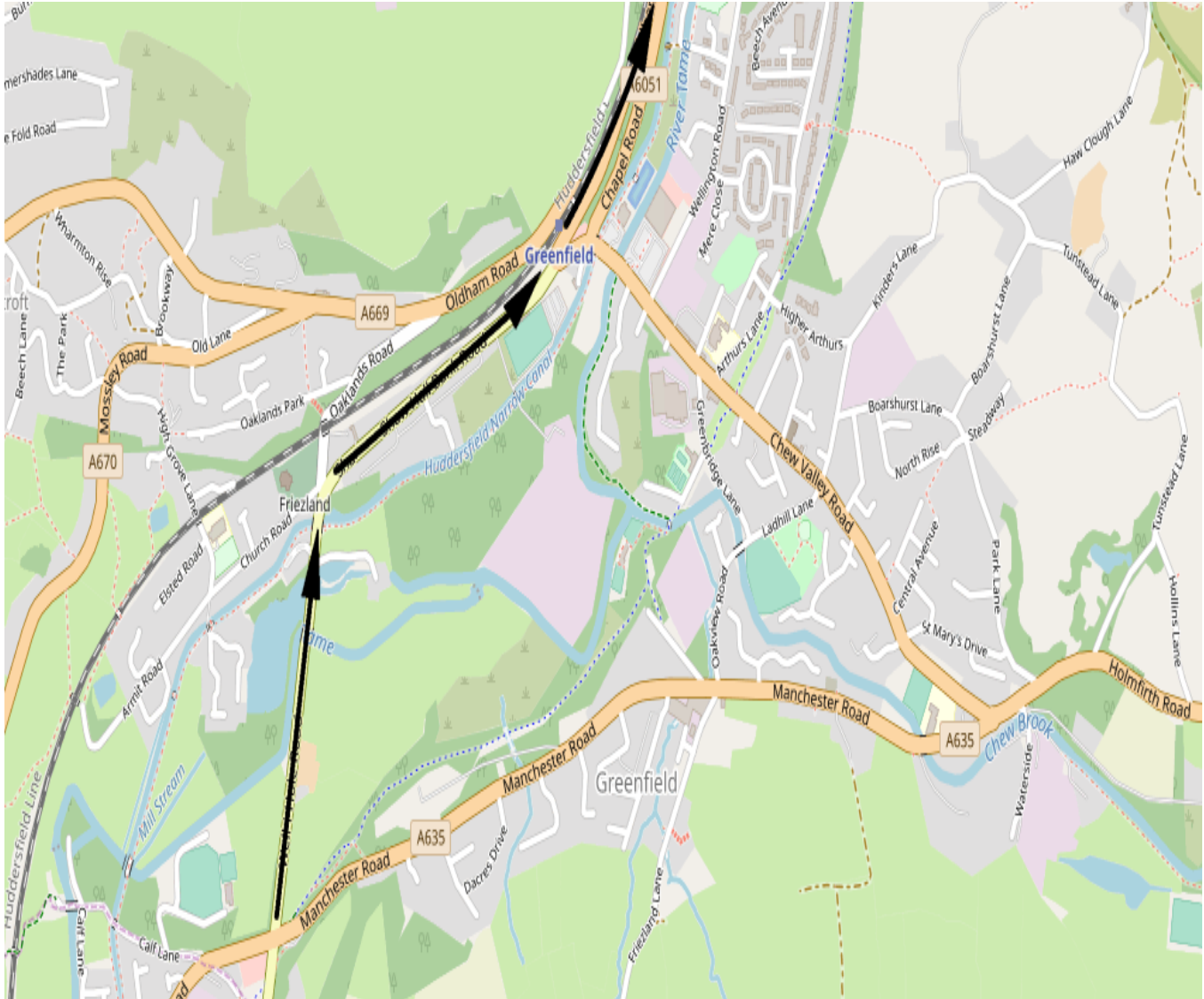
SERVICES AFFECTED: 180,184,350,352,353,354,356





WELL-I-HOLE ROAD – SHAW HALL BANK ROAD –OLDHAM ROAD A669

SERVICES AFFECTED: 180,184,350,352,353,354,356





ROUTE OF TOUR OF BRITAIN AND SERVICES AFFECTED: SHAW:

**BUCKSTONES ROAD – MILNROW ROAD – CROMPTON WAY – ROCHDALE ROAD B6194 –BROAD LANE
(ROCHDALE)**

SERVICES AFFECTED: 58, 59,181,182,403,408,435

